



The Olympia Theatre

Technical Specifications Updated April 2017

Please note that the Stage has undergone an extensive refurbishment/upgrade. If you require additional information, please contact Fearga O'Doherty the Stage/Production Manager at fearga@olympia.ie or +353 1 8972125

Technical Department Staff Details

<u>Name</u>	<u>Job Description</u>	<u>Contact</u>
Fearga O’Doherty	Stage/Production manager	fearga@olympia.ie
Dillon Keane	Chief LX	dillon@olympia.ie
Leo Cooney	Deputy LX	leo@olympia.ie
Lloyd Oosthuizen	Deputy Stage/Flys	lloyd@olympia.ie
Norman Verso	FOH Sound Engineer	via fearga@olympia.ie
John Chisholm	Monitor Engineer	via fearga@olympia.ie

All staff can be contacted via the below number - +353 1 897 2125

STAGE DETAILS

Stage/Production Manager – Fearga O’Doherty – fearga@olympia.ie or +353 1 8972125

STAGE DIMENSIONS

Proscenium Opening	10.50M/34.4 Feet
Pros. Height (Bottom of Iron)	5.94M/19.5 Feet
Safety Curtain	1.17M/3.83 Feet Upstage of front edge
Depth of Stage	10.36M/34 Feet
Height of Stage from Auditorium	1.52M/5 Feet
Depth of Pit	1.219 M/4 Feet
Width of Pit	11.5 M / 37.5 Feet
Flying Height	6.70M/22 Feet
Stage Rake	1:25

Please note that the pit area is filled in and is level with the auditorium floor.

SUSPENSION EQUIPMENT

15 x Double Purchase Counterweight Bars 12m long. Max UDL Per bar 200kg/440lbs.

4 x 11m Installed Lighting Truss (1.100cm) Max Load per truss 400KG / 881.849 lbs.

If other loads for video walls etc are required we but must be informed prior to show to advise.

DRAPES AND MASKING

1 x Red House Tabs, c/w centre opening, suspended from single purchase counterweight bar. The Tabs fly up and down only.

2 x Full Black maskers (soft) 12.2M x 6.67M

3 x Black Border 13M x 3M

6 x Black Legs 7M x 3M

Masking can be arranged in both an up/down, or on/off configuration.

Please note that The Olympia does not have any additional drapes i.e. Star Cloth / Cyc. If required enquiries can be made on your behalf for hire locally.

STAGING

6 x 8x4 Aluminium Stage Risers c/w 1 foot, 2 foot and 3 foot legs for each.

Clamps to join are available, as are skirts .

We have 1 x drum carpet

HEIGHT ACCESS

1 x Zarges Ladder

2 x 2m A-Frame Ladder

ARTIST ACCOMMODATION

5 Dressing rooms are available to any production. They are lockable and alarmed.

Dressing Room 1 – Production Office

Dressing Room 2 – Approx. 4 -6 people

Dressing Room 3 – Approx. 4 - 6 people with toilet and showers.

Dressing Room 4 – Approx. 5 people

Dressing Room 5 – Approx. 5 - 7 people

Shower and Toilet facilities are available on both the 1st and 2nd floor.

Our wardrobe room has a sink, washing machine, tumble dryer and ironing facilities.



LIGHTING SPECIFICATIONS

House LX – Dillon Keane – Dillon@olympia.ie or +353 1 897 2125

3 x 72 way ETC Sensor 3 Dimming Racks c/w thru power modules broken down as follows.

210 x 3kw Circuits – These can be either set to dimming or hot power and are presented on stage level, fly floor and front of house in new facility panels, terminating in both Socapex and 16Amp Cee Form.

6 x 5kw Circuits – These can be either set to dimming or hot power and are presented on stage level and fly floor in new facility panels, terminating in both 16Amp Cee Form and 32Amp Cee Form.

Each Facility panel has 2 x DMX tie lines and 2 data tie lines going back to new Dimmer and patch room @ fly floor level.

An extensive stage rewire has taken place at the end of 2015 including DMX processing, ArtNet and Console upgrades, see below.

LIGHTING CONSOLES

2 x Avolites Arena Consoles (1 as Backup either Stage or Front of House)

1 x ETC Ion c/w Fader wing.

Control from Front Of House is via 8 Universes of Dmx through a Proplex ArtNet Node in Dimmer Room, and 8 x DMX Buffers, we have nodes for both ends

GENERIC LIGHTING STOCK

- 32 x Source 4 Zoom 15/30 750 Watt
- 12 x Source 4 26 Degree c/w Top Hat (these are a fixed lighting position in FOH BOXES)
- 20 x Robert Juliat 310HF 1200 Watt
- 24 x Thomas Par Can Lamp
- 8 x 8 Cell Molephay

FOLLOWSPOTS

2 x Lycian medium throw follow spots situated at the front of the Upper Circle on the right and left of the house

EFFECTS

- 1 x MVS Hazer

MOVING LIGHTS

- 10 x Robe 575 Spot
- 8 x Chauvet 560Z Wash
- 6 x Chauvet 419 Wash

NB

Please note that the following Robe 700 Spots and the Robe 700 Wash are not permanent house stock. They are available from the 10th February 2017 to the 31st October 2017 only.

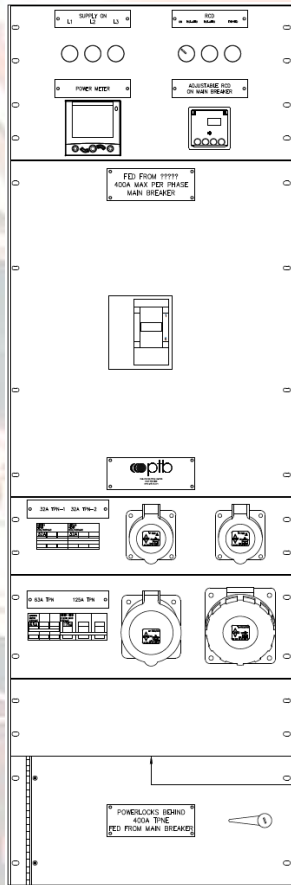
***NB 12 x Robe 700 spots**

12X Robe 700 wash

TOURING LX POWER

Touring LX mains panel is located MSR

- 2 x 32Amp 3 Phase
- 1 x 63Amp 3 Phase
- 1 x 125Amp 3 Phase
- 1 x 400Amp 3 Phase (terminated in power lock in bottom)



MISC

1 x 12 Way Rack Mounted Motor Control c/w Pendant remote.

COMMUNICATIONS

1 x Canford Tec Pro Base System, terminated in facility panels around the theatre, c/w 8 belt packs and headsets with B channel for sound.

1 x 12 way cue light system, terminated in facility panels around theatre and controlled via new stage managers desk.

RIGGING

ONSTAGE RIGGING POINTS – There are three wooden beams running upstage to downstage, with one beam on centre and the others 10 feet either side of centre. Max UDL per beam is 500kg with a max point load of 300kg. Please remember that at present max loading of grid including flying system is 1500kg.

FRONT TRUSS POINTS – The front truss is in a pre-set position and is 11m long of Litec QX40, powder coated black. There is a max loading of 200kg per point.

SOUND SPECIFICATIONS

FRONT OF HOUSE SYSTEM

Console – Avid Profile 48 channel 3 mix engines

Control/Processing –

2 x XTA DP224 X-Overs for Main System

1 x XTA DP226 X-Over for Flown System

2 x XTA DP224 X-Overs for Delays

2 x XTA DP226 X-Over Rear Delays, Front Fills

SYSTEM

4 x L-Acoustics SB218 per side (8 in total)

For seated shows:

3 x L-Acoustics Arcs per side (6 in total)

For standing shows:

6 x L-Acoustics Arcs per side (12 in total)

ALSO

5 x L-Acoustics Arcs flown centre

6 x L-Acoustics MTD115B as Delays (2 on each level)

21 x L-Acoustics MTD108 as Rear Delays (7 on each level)

2 x L – Acoustics MTD108 as Front Fills

AMPS

Labgruppen for L-Acoustics Arcs and SB218s and MTD108s

Crest for L-Acoustics MTD115Bs

MONITOR SYSTEM

Console:

Yamaha M7

Wedges:

12 x SSE MB4 Active 1x 15", 1 x 2"

12 x Crest 7301s

Olympia Theatre – Technical Specifications – Revised April 2017

Drumfill:

- 2 x Wedge as above
- 1 x Electrovoice MT2 Bass (2 X 18”)
- 1 x Crest 6001

Sidefills:

- 2 x 3 Way active sidefills
- 2 x L-Acoustics Arcs per side
- 2 x L-Acoustics dV-Subs per side
- Labgruppen Amps
- XTA DP226 x-over

Mics:

- 8 x Shure SM58
- 8 x Shure SM57
- 6 x Shure Beta57A
- 6 x Sennheiser 604
- 2 x Sennheiser 609
- 4 x Shure SM98
- 4 x Shure SM81
- 3 x Shure KSM 27
- 2 x Shure Beta52
- 2 x Shure SM91
- 1 x Beyer M88
- 10 x BSS AR 133 DI Boxes
- 5 x SCV D12 MKD DI Boxes
- 2 x Klark Teknik DI Boxes
- 3 x Countryman DI Boxes
- 20 x Tall Boom Stands
- 15 x Short Boom Stands

Additional -

- 48 x Channels XTA DS8000 Active Splitters

TOURING SOUND POWER

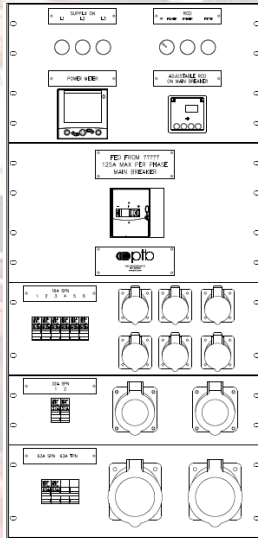
New touring sound power is located MSL

6 x 16Amp Single Phase

2 x 32Amp Single Phase

1 x 63Amp Single Phase

1 x 63Amp Three Phase



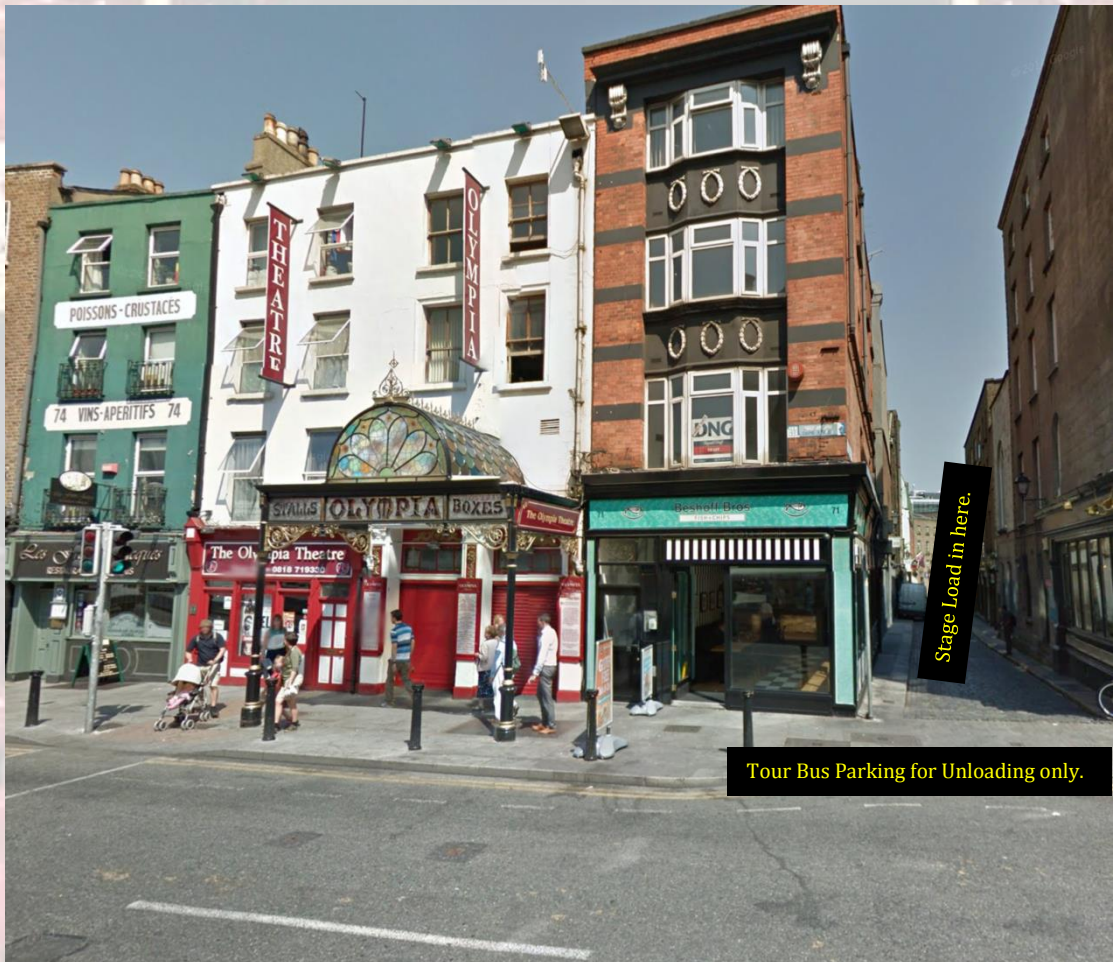
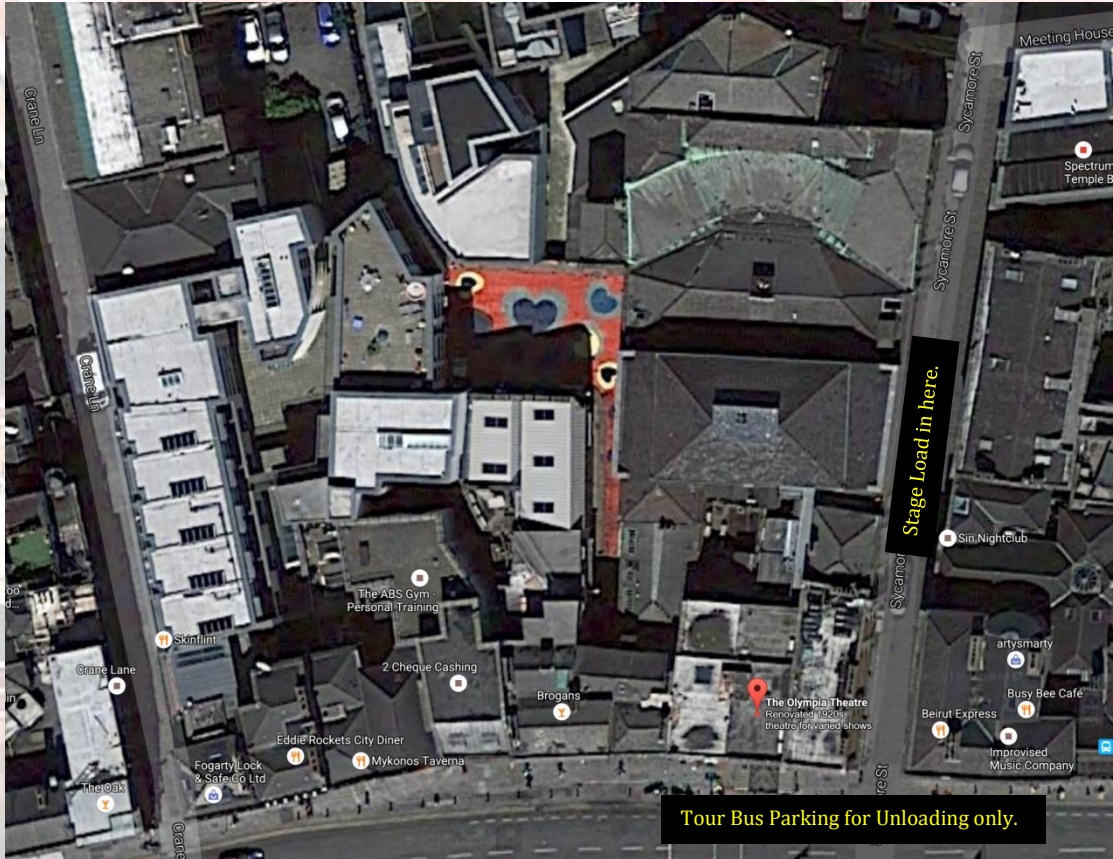
LOADING AND UNLOADING

Please note that The Olympia Theatre is situated in Dublin City Centre, and that onsite venue parking is unfortunately not possible.

Arctics and smaller trucks and splitters/vans should access the venue via Sycamore Street, which is the laneway adjacent to the venue frontage. There is direct access to stage door and stage loading dock from this point. Once vehicles are tipped, they need to leave the venue. Olympia/MCD can assist with arranging offsite parking.

Tour buses/trailers should pull up on venue frontage, and the tip needs to be as prompt as possible. It is helpful for the bus to face Trinity College/City Centre to facilitate your load in.

Olympia Theatre – Technical Specifications – Revised April 2017



Offsite commercial parking is usually at:

Topaz Facility

Hireco East Road

Promenade Rd

OR

East Wall

Dublin Port Dublin 1

Dublin 3

Truck and bus parking is available there on a 24 hour basis. Landlines/Shore power is available there also.

Payment is on a cash basis, The Olympia does not operate an account at Topaz or Hireco. Pre book is not generally necessary.

For Load in 's at the Olympia /theatre

*****All vehicles with 5 axles and over require a Stop/Unload Permit from Dublin City Council. Details from your show contact or directly from <www.hgv.ie> *****

NOISE ABATEMENT

The Olympia Theatre operates on a good neighbour basis with the surrounding businesses and residents. Therefore we ask that all loading and vehicle movements, especially those outside of normal working hours, are conducted with as little unnecessary noise as possible. Olympia stage manager will close loading dock door as soon as main load in is complete in order to avoid linecheck/soundcheck noise spill, where possible.

MIX/CONTROL POSITION

The Olympia Theatre mix/control position sizing has changed to fall in line with regulations stipulated by the Municipal Fire Officer. Please note that the mix is situated under the Circle floor overhang, and that the position cannot be moved forward. From mix to DSE is 15m/50Feet.

Small Mix Size – 4M x 2M/ 13Feet x 6.5Feet

Large Mix Size- 6.5M x 2M/ 21Feet x 6.5Feet

*** Please note that the mix position is a structure and these sizes cannot be modified***

MERCHANDISE

At The Olympia Theatre, merchandise concession is via Seminal Merchandise, details directly from Raymond Bell – raymond@seminalmerchandising.com

Tel +353 1 411 3334 or check with your venue contact/show rep.